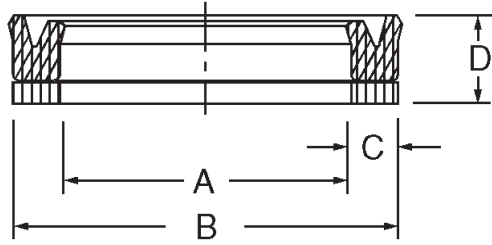


Metric Urethane Rod U-Cups with Backup

Metric Urethane Rod U-Cups



This sealing set is designed to resist extrusion even with an excessive clearance gap. The seal is made from 90+ Shore A hardness urethane and the backup ring is machined from bronze filled TFE or molded from 55 Shore D hardness hytrel.

Temperature: -40F to 230F

Pressure: 0 to 7000 psi

Part Number				Price
Prefix	Inside Dia. A mm	Outside Dia. B mm	Height D mm	
MA30B	- 35	X 45	X 7.5	\$ 11.00
MA30B	- 40	X 50	X 7.5	\$ 11.45
MA30B	- 50	X 63	X 12	\$ 15.26
MA30B	- 60	X 73	X 13.2	\$ 18.56
MA30B	- 65	X 78	X 13.2	\$ 18.84
MA30B	- 70	X 83	X 13.2	\$ 19.64
MA30B	- 75	X 88	X 13.2	\$ 20.92
MA30B	- 80	X 93	X 13.2	\$ 21.62
MA30B	- 85	X 100	X 11.8	\$ 24.43

Part Number				Price
Prefix	Inside Dia. A mm	Outside Dia. B mm	Height D mm	
MA30B	- 85	X 100	X 13.2	\$ 26.36
MA30B	- 90	X 105	X 13.2	\$ 27.55
MA30B	- 95	X 110	X 13.2	\$ 28.87
MA30B	- 100	X 115	X 13.2	\$ 30.21
MA30B	- 100	X 120	X 15	\$ 36.59
MA30B	- 105	X 120	X 13.2	\$ 37.36
MA30B	- 110	X 125	X 13.2	\$ 38.99
MA30B	- 110	X 130	X 15	\$ 41.30
MA30B	- 120	X 140	X 15	\$ 44.52