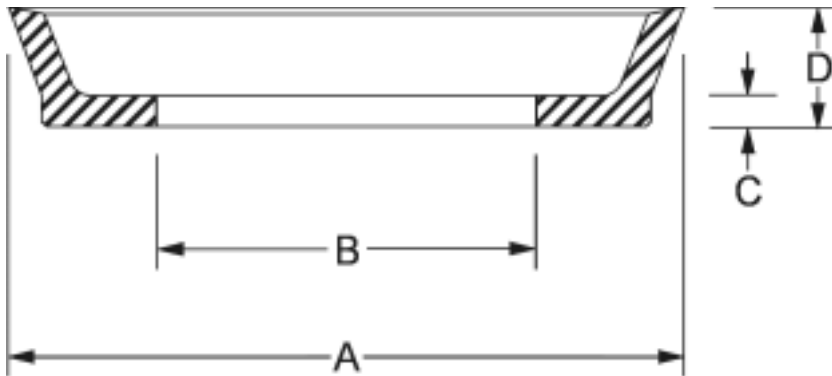


SCO Type Homogeneous Nitrile Piston Cups



SCO Homogeneous nitrile piston cups are used primarily for pneumatic and low pressure hydraulic applications. Cups are supplied solid. Center holes ("B") are available at an additional charge. Consult sales for price and availability of non-standard sizes.

Temperature: -40 to 250F

Pressure: 0 to 800 PSI

Part Number	Bore Dia. A	Base Height C	Total Height D	Center Hole B	Price
SC00375	3/8	1/16	1/4		\$ 3.11
SC00437	7/16	1/16	1/4		\$ 3.53
SC00500	1/2	1/16	1/4		\$ 3.53
SC00562	9/16	1/16	1/4		\$ 3.70
SC00625	5/8	3/32	9/32		\$ 3.14
SC00687	11/16	3/32	9/32		\$ 3.75
SC00750	3/4	3/32	9/32		\$ 3.16
SC00812	11/16	3/32	9/32		\$ 3.30
PCH875-250-125-375	7/8	1/8	1/4	3/8	\$ 3.39
SC00875	7/8	3/32	3/8		\$ 3.27
SC00937	15/16	3/32	3/8		\$ 3.34
SC01000	1	3/32	7/16		\$ 3.23
SC01125	1-1/8	3/32	7/16		\$ 3.55
SC01250	1-1/4	3/32	7/16		\$ 3.71
SC01375	1-3/8	3/32	7/16		\$ 3.77
SC01500	1-1/2	1/8	1/2		\$ 3.71
SC01625	1-5/8	1/8	1/2		\$ 3.82
SC01750	1-3/4	1/8	1/2		\$ 3.88
SC01844	1.844	1/8	1/2		\$ 4.11
SC01875	1-7/8	1/8	1/2		\$ 4.11
SC02000	2	1/8	1/2		\$ 4.15
PCH2000-625-156-500	2	5/32	5/8	1/2	\$ 4.97
SC02125	2-1/8	1/8	1/2		\$ 4.25
SC02250	2-1/4	1/8	1/2		\$ 4.50
SC02375	2-3/8	1/8	1/2		\$ 4.56
SC02437	2-7/16	1/8	1/2		\$ 4.56
SC02500	2-1/2	1/8	1/2		\$ 4.58
SC02625	2-5/8	1/8	1/2		\$ 4.72
SC02750	2-3/4	1/8	1/2		\$ 4.78
SC02875	2-7/8	1/8	1/2		\$ 4.83
SC03000	3	5/32	5/8		\$ 5.43
PCH3000-500-125-1000	3	1/8	1/2	1	\$ 9.24
SC03125	3-1/8	5/32	5/8		\$ 6.27
SC03250	3-1/4	5/32	5/8		\$ 6.67
SC03375	3-3/8	5/32	5/8		\$ 6.86
PCH-3500-250-125-2000	3-1/2	1/8	1/4	2	\$ 9.93
SC03500	3-1/2	5/32	5/8		\$ 7.04
SC03625	3-5/8	5/32	5/8		\$ 7.28
SC03750	3-3/4	5/32	5/8		\$ 7.46
SC03875	3-7/8	5/32	5/8		\$ 7.71
PCH4000-500-125	4	1/8	1/2		\$ 7.88
PCH4000-500-125-1500	4	1/8	1/2	1-1/2	\$ 8.95

Part Number	Bore Dia. A	Base Height C	Total Height D	Center Hole B	Price
PCH4000-500-125-2750	4	1/8	1/2	2-3/4	\$ 8.95
SC04000	4	5/32	5/8		\$ 7.88
SC04000 V90 Viton	4	5/32	5/8		\$ 46.74
SC04187	4-3/16	5/32	5/8		\$ 9.73
SC04250	4-1/4	5/32	5/8		\$ 10.43
SC04500	4-1/2	5/32	5/8		\$ 11.58
SC04750	4-3/4	5/32	5/8		\$ 12.28
PCH5000-625-125	5	1/8	5/8		\$ 18.35
PCH5000-750-156	5	5/32	3/4		\$ 12.51
SC05000	5	3/16	3/4		\$ 12.51
SC05125	5-1/8	3/16	3/4		\$ 13.21
SC05250	5-1/4	3/16	3/4		\$ 13.44
SC05375	5-3/8	3/16	3/4		\$ 13.67
SC05500	5-1/2	3/16	3/4		\$ 13.90
SC05625	5-5/8	3/16	3/4		\$ 45.20
SC05750	5-3/4	3/16	3/4		\$ 14.60
SC05875	5-7/8	3/16	3/4		\$ 47.44
SC06000	6	3/16	3/4		\$ 16.22
SC06125	6-1/8	3/16	3/4		\$ 48.35
SC06250	6-1/4	3/16	3/4		\$ 16.92
SC06375	6-3/8	3/16	3/4		\$ 49.79
SC06500	6-1/2	3/16	3/4		\$ 17.38
SC06625	6-5/8	3/16	3/4		\$ 18.64
SC06750	6-3/4	3/16	3/4		\$ 19.70
PCH7000-625-125	7	1/8	5/8		\$ 25.20
SC07000	7	3/16	3/4		\$ 21.31
SC07250	7-1/4	3/16	3/4		\$ 21.78
SC07500	7-1/2	3/16	3/4		\$ 22.09
SC07750	7-3/4	3/16	3/4		\$ 23.04
SC08000	8	3/16	1		\$ 24.09
PCH8500-750-187	8-1/2	3/16	3/4		\$ 25.75
SC08500	8-1/2	3/16	1		\$ 37.05
SC09000	9	3/16	1		\$ 31.51
SC09500	9-1/2	3/16	1		\$ 34.06
SC10000	10	3/16	1		\$ 38.46
SC10250	10-1/4	3/16	1		\$ 39.42
SC10500	10-1/2	3/16	1		\$ 40.55
SC11000	11	3/16	1		\$ 41.70
SC11500	11-1/2	3/16	1		\$ 42.16
SC12000	12	3/16	1		\$ 46.39
SC14000	14	3/16	1		\$ 69.27
SC15000	15	3/16	1		\$ 77.46

SCO Piston Cups