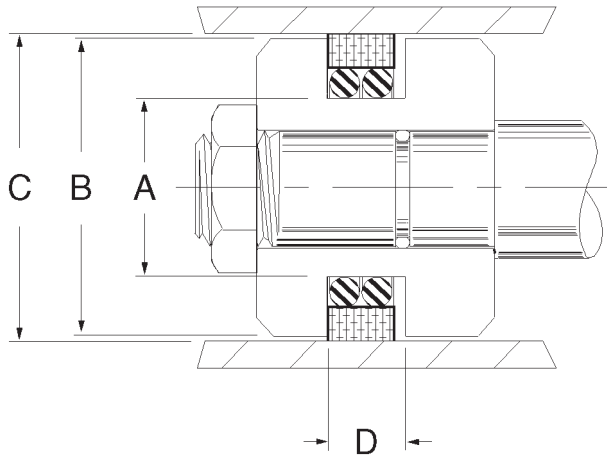


AS880 TFE Piston Seals



AS880 style rectangular piston seal assemblies are basically double wide AS800 seals. They are manufactured from glass filled TFE and include two 70 durometer nitrile o-ring energizers. They are used in some mobile hydraulic applications including drilling equipment and boom trucks.

Temperature: -40 to 225F

Pressure: 0 to 3,000 PSI

Part Number	Bore Dia. C ±.001	Piston Dia. B ±.001	Groove Dia. A ±.002	Groove Width D +.005 -.000	Seal Width D ₁	Seal Wall	Expander Cross Section	Price
AS880E-48	3.000	2.996	2.482	0.312	0.295	0.143	0.139	P.O.R.
AS880E-64	4.000	3.996	3.482	0.312	0.295	0.143	0.139	\$ 21.05
AS880E-68	4.250	4.246	3.732	0.312	0.295	0.143	0.139	\$ 25.74
AS880E-72	4.500	4.496	3.982	0.312	0.295	0.143	0.139	\$ 23.35
AS880E-80	5.000	4.996	4.482	0.312	0.295	0.143	0.139	\$ 29.07
AS880E-88	5.500	5.496	4.982	0.312	0.295	0.143	0.139	\$ 35.70
AS880E-96	6.000	5.996	5.482	0.312	0.295	0.143	0.139	\$ 41.16
AS880E-104	6.500	6.496	5.982	0.312	0.295	0.143	0.139	\$ 57.55
AS880E-112	7.000	6.996	6.482	0.312	0.295	0.143	0.139	\$ 59.36
AS880E-132	8.250	8.246	7.732	0.312	0.295	0.143	0.139	\$ 63.77
AS880E-160	10.000	9.996	9.482	0.312	0.295	0.143	0.139	\$ 82.72
AS880E-176	11.000	10.996	10.482	0.312	0.295	0.143	0.139	\$ 88.13
AS880E-192	12.000	11.996	11.482	0.312	0.295	0.143	0.139	\$ 97.78
AS880E-208	13.000	12.996	12.482	0.312	0.295	0.143	0.139	\$ 99.63
AS880E-224	14.000	13.996	13.482	0.312	0.295	0.143	0.139	\$108.15

It's fun to view the
 competition through
 your rear view mirror!