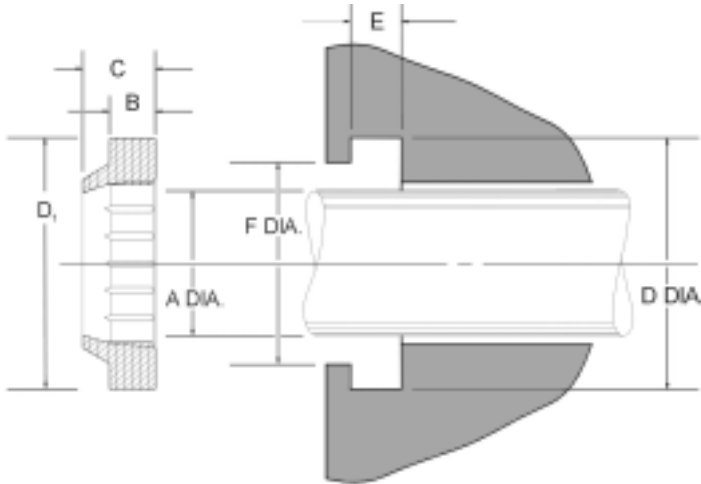


U Type with Ribbed Heel



The ribbed heel snap-in rod wiper has been designed to fit “universal” type housings. The proportions of the wiping lip ensure that contact is maintained with the surface of the rod to remove heavily deposited mud, ice, etc. The outside of the wiper has snug contact with the inside of the housing and has a wiping lip to prevent contaminants from entering the groove. The molded ribs on the inside provide extra stability to the wiper and help prevent pressure trapping.

Temperature: -40 to 230F

U Wipers

Part No.	Wiper Dimensions				Groove Dimensions			Price
	A Rod Dia.	D ₁ Outside Dia.	B Base Height	C Max. Length	D +.006 -.006	E +.004 -.000	F +.010 -.000	
U-0500R	0.500	3/4	1/8	.210	0.747	.124	0.660	\$ 1.19
U-0625R	0.625	7/8	1/8	.210	0.872	.124	0.785	\$ 1.19
U-0750R	0.750	1-1/8	3/16	.305	1.122	.187	0.995	\$ 1.16
U-0875R	0.875	1-1/4	3/16	.305	1.247	.187	1.120	\$ 1.23
U-1000R	1.000	1-3/8	3/16	.305	1.372	.187	1.245	\$ 1.24
U-1125R	1.125	1-1/2	3/16	.305	1.497	.187	1.370	\$ 1.35
U-1250R	1.250	1-5/8	3/16	.305	1.622	.187	1.495	\$ 1.47
U-1375R	1.375	1-3/4	3/16	.305	1.747	.187	1.620	\$ 1.62
U-1500R	1.500	1-7/8	3/16	.305	1.872	.187	1.745	\$ 1.75
U-1625R	1.625	2	3/16	.305	1.997	.187	1.870	\$ 1.83
U-1750R	1.750	2-1/8	3/16	.305	2.122	.187	1.995	\$ 1.81
U-2000R	2.000	2-1/2	1/4	.395	2.497	.249	2.327	\$ 2.22
U-2250R	2.250	2-3/4	1/4	.395	2.747	.249	2.577	\$ 2.38
U-2375R	2.375	2-7/8	1/4	.395	2.872	.249	2.702	\$ 2.52
U-2500R	2.500	3	1/4	.395	2.997	.249	2.827	\$ 2.53

Part No.	Wiper Dimensions				Groove Dimensions			Price
	A Rod Dia.	D ₁ Outside Dia.	B Base Height	C Max. Length	D +.006 -.000	E +.004 -.000	F +.010 -.000	
U-2750R	2.750	3-1/4	1/4	.395	3.247	.249	3.077	\$ 2.97
U-3000R	3.000	3-1/2	1/4	.395	3.497	.249	3.327	\$ 3.51
U-3250R	3.250	3-3/4	1/4	.395	3.747	.249	3.577	\$ 3.90
U-3500R	3.500	4	1/4	.395	3.997	.249	3.827	\$ 4.27
U-3750R	3.750	4-1/4	1/4	.395	4.247	.249	4.077	\$ 4.85
U-4000R	4.000	4-1/2	1/4	.395	4.497	.249	4.327	\$ 5.42
U-4250R	4.250	4-3/4	1/4	.395	4.747	.249	4.577	\$ 5.73
U-4500R	4.500	5-1/4	3/8	.585	5.247	.374	4.993	\$ 9.19
U-4750R	4.750	5-1/2	3/8	.585	5.497	.374	5.243	\$ 10.15
U-5000R	5.000	5-3/4	3/8	.585	5.747	.374	5.493	\$ 11.14
U-5250R	5.250	6	3/8	.585	5.997	.374	5.743	\$ 12.26
U-5500R	5.500	6-1/4	3/8	.585	6.247	.374	5.993	\$ 13.46
U-6000R	6.000	6-3/4	3/8	.585	6.747	.374	6.493	\$ 14.73
U-7000R	7.000	7-3/4	3/8	.585	7.747	.374	7.493	\$ 17.53
U-8000R	8.000	8-3/4	3/8	.585	8.747	.374	8.493	\$ 21.23